

MODULED

MODULAR FLICKER-FREE LED LUMINAIRE

APPLICATIONS

- Industrial halls
- Warehouses
- Agriculture
- Production premises
- Mines

MODULAR MODELS

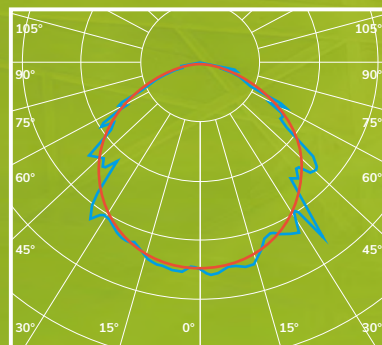
- Available in several different sizes and power classes
- Easily and quickly installed
- Several fastening and connection alternatives
- Extra savings with control technology (DALI/SMART)

12 DIFFERENT POWER CLASSES

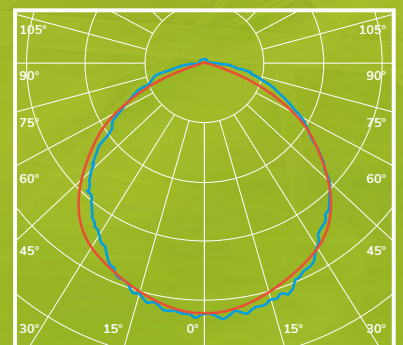
Luminous flux: 4 350 lm – 62 200 lm

Power: 38 W – 423 W

Length: 39 cm – 125 cm



cd/klm — C0–C180 — C90–C270 n=100%



cd/klm — C0–C180 — C80–C270 n=100%



Ledistys Oy luminaires are manufactured in Kempele.

For more information: info@ledistys.fi

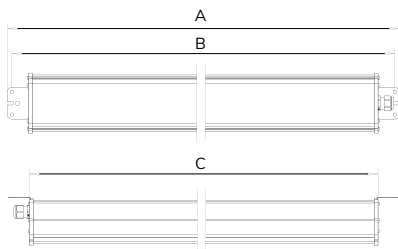
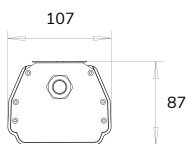
or visit us at www.ledistys.fi



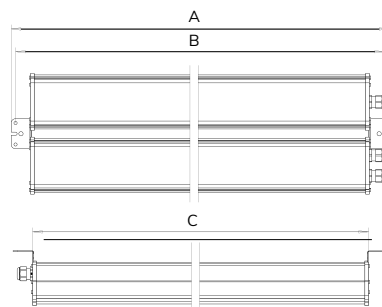
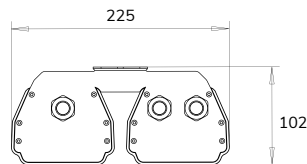
DIMENSIONS AND SPECIFICATIONS

Model	Electric number	Power [W]	Opal [Lm]	Clear [lm]	A [mm]	B [mm]	C [mm]	Weight
MDL401	4322408	38	4346	4997	464	448	389	1,5
MDL402	4322409	73	8693	9995	464	448	389	3,0
MDL403	4322410	107	13040	14991	464	448	389	4,5
MDL801	4322411	73	8693	9995	694	678	619	2,5
MDL802	4322412	141	17385	19990	694	678	619	5,0
MDL803	4322413	214	26079	29985	694	678	619	7,5
MDL1201	4322414	107	13040	14992	994	978	919	3,0
MDL1202	4322415	214	26080	29984	994	978	919	6,0
MDL1203	4322416	321	39120	44976	994	978	919	9,0
MDL1601	4322417	141	17385	20063	1294	1278	1219	4,0
MDL1602	4322418	282	34770	40126	1294	1278	1219	8,0
MDL1603	4322419	423	52155	60189	1294	1278	1219	12,0

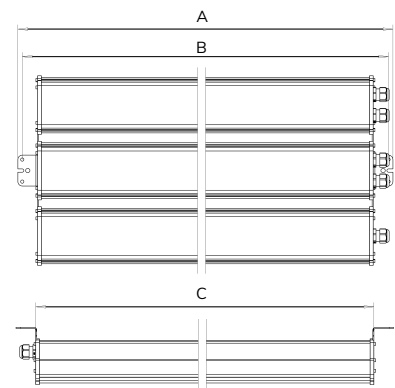
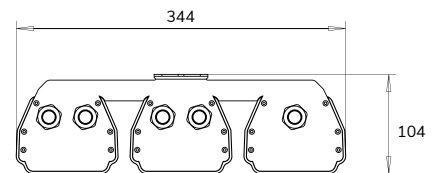
Model: MDLXXX1



Model: MDLXXX2



Model: MDLXXX3



Color rendering index: >80 Ra
 Typical luminous efficacy: ~130 lm/W (led 163 lm/W)
 Control options: SMART / DALI
 Navigation lights with battery: 60 min. 3 W (Optional)
 Operating temperature: -40 °C ... +50 °C
 Service life: L80F10 >100 000 h
 Voltage: 230VAC
 Color temperature of the light: 4000 K (Others available)

All values at +25 °C ambient temperature
 + - 5 % tolerance in luminous flux
 + - 5 % tolerance in power
 Not for condensing environment